



Wireline



Composite image



NOTE: Tripod location photo of verifiable photography not available from surveyor. The photo shown is of the tripod location for baseline winter photography taken by the landscape architect, which was taken from the same position as the verifiable view.

Tripod location

Title	19. Working view to radio masts from Leckhampton Hill trig point	HFoV (°)	90	Visualisation type	4	Camera (lens)	Sony A7rIV, FFS (35mm)
Date, time	15 January 2020, 09:20	Scale/ Enlargement factor	96% at A1	Projection	Cylindrical	Height of camera lens	1.6m
Coordinates	SO 94883 18387 292m AOD	Distance from site boundary	2132m	View direction	190° from N		
To be viewed at comfortable arms length							



ARUP

Issue	Date	Comment	By	Chkd	Appd
C01	2021-02-20	DCO Application Submission (May 2021)	HS	AK	JP

A3 - Stage Completed

A417 Missing Link Project
Figure 7.10 Photosheets and Visualisations. Sheet 35 of 92
 HE551505-ARP-ELS-X_XX_XXXX_X-VS-LE-000004



Title:	20. Winter view to Leckhampton Road from Ochala Wood in Crickley Hill CP	HFoV (°)	90	Visualisation type	1	View direction	South
Date, time:	21 November 2019, 11:22	Scale/ Enlargement factor	96% at A1	Projection	Cylindrical	Camera (lens)	Nikon D610, FFS (Nikon 50mm)



Title:	20. Summer view to Leckhampton Road from Ochala Wood in Crickley Hill CP	HFoV (°)	90	Visualisation type	1	View direction	South
Date, time:	9 September 2019, 11:04	Scale/ Enlargement factor	96% at A1	Projection	Cylindrical	Camera (lens)	Nikon D610, FFS (Nikon 50mm)



Issue	Date	Comment	By	Chkd	Appd
C01	2021-05-20	DCO Application Submission (May 2021)	HS	AK	JP

A3 - Stage Completed



Title:	21. Winter view to Air Balloon roundabout from entrance to Crickley Hill CP	HFoV (°)	90	Visualisation type	1	View direction	South West
Date, time:	15 January 2020, 10:16	Scale/ Enlargement factor	96% at A1	Projection	Cylindrical	Camera (lens)	Sony A7rIV, FFS (35mm)



Title:	21. Summer view to Air Balloon roundabout from entrance to Crickley Hill CP	HFoV (°)	90	Visualisation type	1	View direction	South West
Date, time:	9 September 2019, 11:21	Scale/ Enlargement factor	96% at A1	Projection	Cylindrical	Camera (lens)	Nikon D610, FFS (Nikon 50mm)



ARUP

Issue	Date	Comment	By	Chkd	Appd
C01	2021-05-20	DCO Application Submission (May 2021)	HS	AK	JP

A3 - Stage Completed

A417 Missing Link Project
Figure 7.10 Photosheets and Visualisations. Sheet 37 of 92
 HE551505-ARP-ELS-X_XX_XXXX_X-VS-LE-000004



Winter baseline photograph



Operation year 1 winter photomontage

Title	21. Year 1 view to Air Balloon roundabout from entrance to Crickley Hill CP	HFoV (°)	90	Visualisation type	4	Camera (lens)	Sony A7rIV, FFS (35mm)
Date, time	15 January 2020, 10:16	Scale/ Enlargement factor	96% at A1	Projection	Cylindrical	Height of camera lens	1.6m
Coordinates	SO 93603 16333 227m AOD	Distance from site boundary	0m	View direction	150° from N		
To be viewed at comfortable arms length							



ARUP

Issue	Date	Comment	By	Chkd	Appd
C01	2021-05-20	DCO Application Submission (May 2021)	HS	AK	JP

A3 - Stage Completed

A417 Missing Link Project
Figure 7.10 Photosheets and Visualisations. Sheet 38 of 92
 HE551505-ARP-ELS-X_XX_XXXX_X-VS-LE-000004



Winter baseline photograph



Operation year 15 winter photomontage

Title	21. Year 15 view to Air Balloon roundabout from entrance to Crickley Hill CP	HFoV (°)	90	Visualisation type	4	Camera (lens)	Sony A7rIV, FFS (35mm)
Date, time	15 January 2020, 10:16	Scale/ Enlargement factor	96% at A1	Projection	Cylindrical	Height of camera lens	1.6m
Coordinates	SO 93603 16333 227m AOD	Distance from site boundary	0m	View direction	150° from N		
To be viewed at comfortable arms length							

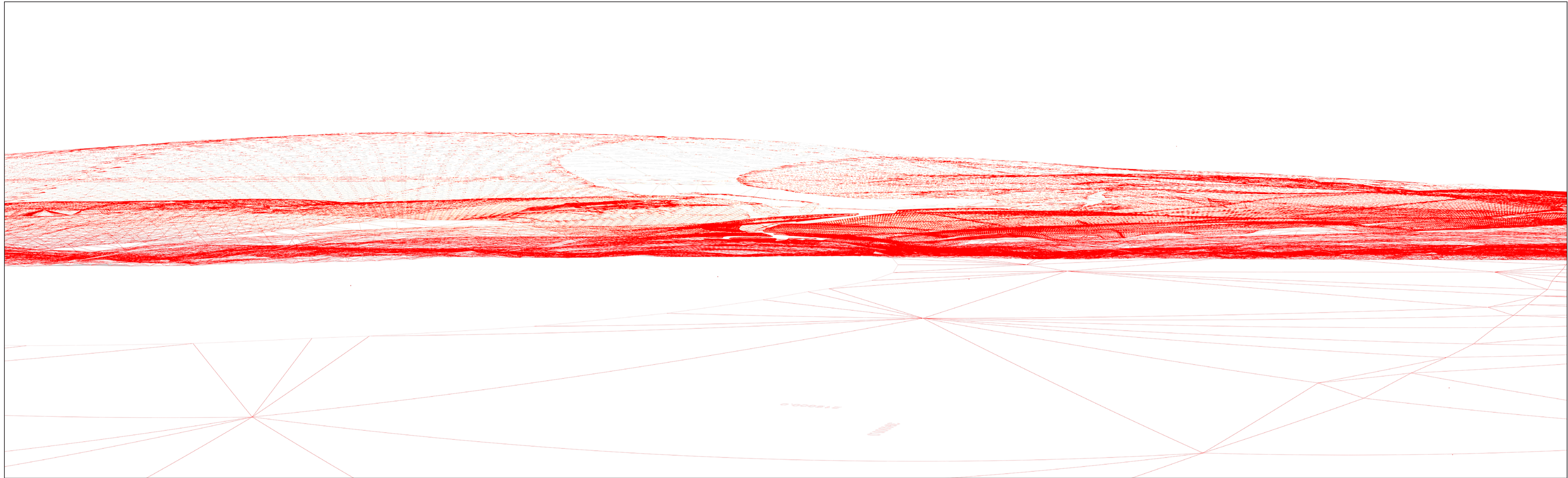


ARUP

Issue	Date	Comment	By	Chkd	Appd
C01	2021-05-20	DCO Application Submission (May 2021)	HS	AK	JP

A3 - Stage Completed

A417 Missing Link Project
Figure 7.10 Photosheets and Visualisations. Sheet 39 of 92
 HE551505-ARP-ELS-X_XX_XXXX_X-VS-LE-000004



Wireline



Composite image



NOTE: Tripod location photo of verifiable photography not available from surveyor. The photo shown is of the tripod location for baseline winter photography taken by the landscape architect, which was taken from the same position as the verifiable view.

Tripod location

Title	21. Working view to Air Balloon roundabout from entrance to Crickley Hill CP	HFoV (°)	90	Visualisation type	4	Camera (lens)	Sony A7rIV, FFS (35mm)
Date, time	15 January 2020, 10:16	Scale/ Enlargement factor	96% at A1	Projection	Cylindrical	Height of camera lens	1.6m
Coordinates	SO 93603 16333 227m AOD	Distance from site boundary	0m	View direction	150° from N		
To be viewed at comfortable arms length							



ARUP

Issue	Date	Comment	By	Chkd	Appd
C01	2021-02-20	DCO Application Submission (May 2021)	HS	AK	JP

A3 - Stage Completed

A417 Missing Link Project
Figure 7.10 Photosheets and Visualisations. Sheet 40 of 92
 HE551505-ARP-ELS-X_XX_XXXX_X-VS-LE-000004



Night time representation



Night time data

Title	21. Night view to Air Balloon roundabout from entrance to Crickley Hill CP	HFoV (°)	90	Visualisation type	4	Camera (lens)	Sony A7rIV, FFS (35mm)
Date, time	4 February 2020	Scale/ Enlargement factor	96% at A1	Projection	Cylindrical	Height of camera lens	1.6m
Coordinates	SO 93603 16333 227m AOD	Distance from site boundary	0m	View direction	150° from N		
To be viewed at comfortable arms length							



ARUP

Issue	Date	Comment	By	Chkd	Appd
C01	2021-05-20	DCO Application Submission (May 2021)	HS	AK	JP

A3 - Stage Completed

A417 Missing Link Project
Figure 7.10 Photosheets and Visualisations. Sheet 41 of 92
 HE551505-ARP-ELS-X_XX_XXXX_X-VS-LE-000004



Title:	22. Winter view to Barrow Wake from Crickley Hill on Cotswold Way	HFoV (°)	90	Visualisation type	1	View direction	South
Date, time:	25 February 2020, 11:24	Scale/ Enlargement factor	96% at A1	Projection	Cylindrical	Camera (lens)	Nikon D610, FFS (Nikon 50mm)



Title:	22. Summer view to Barrow Wake from Crickley Hill on Cotswold Way	HFoV (°)	90	Visualisation type	1	View direction	South
Date, time:	9 September 2019, 11:32	Scale/ Enlargement factor	96% at A1	Projection	Cylindrical	Camera (lens)	Nikon D610, FFS (Nikon 50mm)



ARUP

Issue	Date	Comment	By	Chkd	Appd
C01	2021-05-20	DCO Application Submission (May 2021)	HS	AK	JP

A3 - Stage Completed

A417 Missing Link Project
Figure 7.10 Photosheets and Visualisations. Sheet 42 of 92
 HE551505-ARP-ELS-X_XX_XXXX_X-VS-LE-000004



Title:	23. Winter view to Air Balloon from Gloucestershire Way on A417	HFoV (°)	90	Visualisation type	1	View direction	North
Date, time:	26 February 2020, 13:04	Scale/ Enlargement factor	96% at A1	Projection	Cylindrical	Camera (lens)	Nikon D610, FFS (Nikon 50mm)



Title:	23. Summer view to Air Balloon from Gloucestershire Way on A417	HFoV (°)	90	Visualisation type	1	View direction	North
Date, time:	5 September 2019, 14:51	Scale/ Enlargement factor	96% at A1	Projection	Cylindrical	Camera (lens)	Nikon D610, FFS (Nikon 50mm)



ARUP

Issue	Date	Comment	By	Chkd	Appd
C01	2021-05-20	DCO Application Submission (May 2021)	HS	AK	JP

A3 - Stage Completed

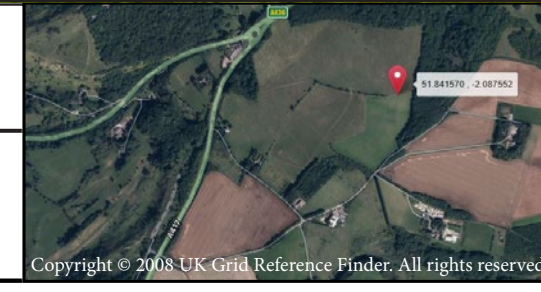
A417 Missing Link Project
Figure 7.10 Photosheets and Visualisations. Sheet 43 of 92
 HE551505-ARP-ELS-X_XX_XXXX_X-VS-LE-000004



Title:	24. Winter view from bridleway south of Ullen Wood	HFoV (°)	90	Visualisation type	1	View direction	South
Date, time:	25 February 2020, 15:22	Scale/ Enlargement factor	96% at A1	Projection	Cylindrical	Camera (lens)	Nikon D610, FFS (Nikon 50mm)



Title:	24. Summer view from bridleway south of Ullen Wood	HFoV (°)	90	Visualisation type	1	View direction	South
Date, time:	9 September 2019, 15:27	Scale/ Enlargement factor	96% at A1	Projection	Cylindrical	Camera (lens)	Nikon D610, FFS (Nikon 50mm)



ARUP

Issue	Date	Comment	By	Chkd	Appd
C01	2021-05-20	DCO Application Submission (May 2021)	HS	AK	JP

A3 - Stage Completed



Title:	25. Winter view to kennels from Gloucestershire Way by Emma's Grove	HFoV (°)	90	Visualisation type	1	View direction	South East
Date, time:	25 February 2020, 12:51	Scale/ Enlargement factor	96% at A1	Projection	Cylindrical	Camera (lens)	Nikon D610, FFS (Nikon 50mm)



Title:	25. Summer view to kennels from Gloucestershire Way by Emma's Grove	HFoV (°)	90	Visualisation type	1	View direction	South East
Date, time:	5 September 2019, 15:11	Scale/ Enlargement factor	96% at A1	Projection	Cylindrical	Camera (lens)	Nikon D610, FFS (Nikon 50mm)



ARUP

Issue	Date	Comment	By	Chkd	Appd
C01	2021-05-20	DCO Application Submission (May 2021)	HS	AK	JP

A3 - Stage Completed

A417 Missing Link Project
Figure 7.10 Photosheets and Visualisations. Sheet 45 of 92
 HE551505-ARP-ELS-X_XX_XXXX_X-VS-LE-000004



Title:	26. Winter view to Stockwell from Cuckoopen Farm	HFoV (°)	90	Visualisation type	1	View direction	South West
Date, time:	28 November 2019, 12:47	Scale/ Enlargement factor	96% at A1	Projection	Cylindrical	Camera (lens)	Nikon D610, FFS (Nikon 50mm)



Title:	26. Summer view to Stockwell from Cuckoopen Farm	HFoV (°)	90	Visualisation type	1	View direction	South West
Date, time:	9 September 2019, 15:47	Scale/ Enlargement factor	96% at A1	Projection	Cylindrical	Camera (lens)	Nikon D610, FFS (Nikon 50mm)



ARUP

Issue	Date	Comment	By	Chkd	Appd
C01	2021-05-20	DCO Application Submission (May 2021)	HS	AK	JP

A3 - Stage Completed

A417 Missing Link Project
Figure 7.10 Photosheets and Visualisations. Sheet 46 of 92
 HE551505-ARP-ELS-X_XX_XXXX_X-VS-LE-000004